



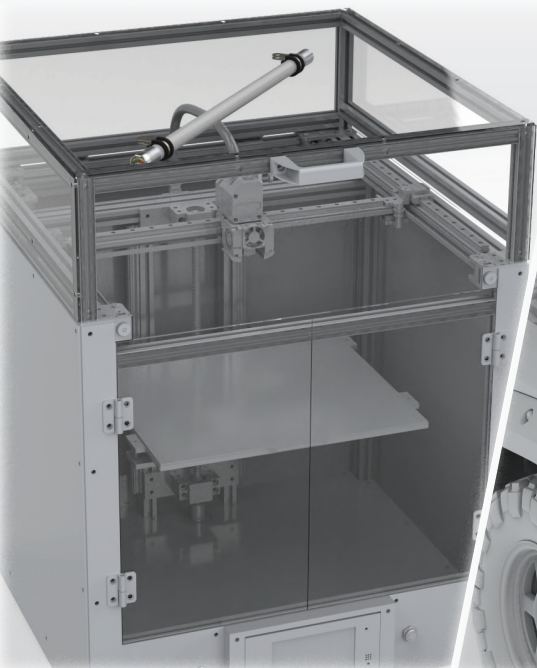
# Automatic Fire Suppression Systems

T Series

Clean Agent

BLAZE CUT Automatic fire suppression system  
PLEASURE BOATS • SMALL VEHICLES • MACHINES • ELECTRICAL CABINETS  
T Series

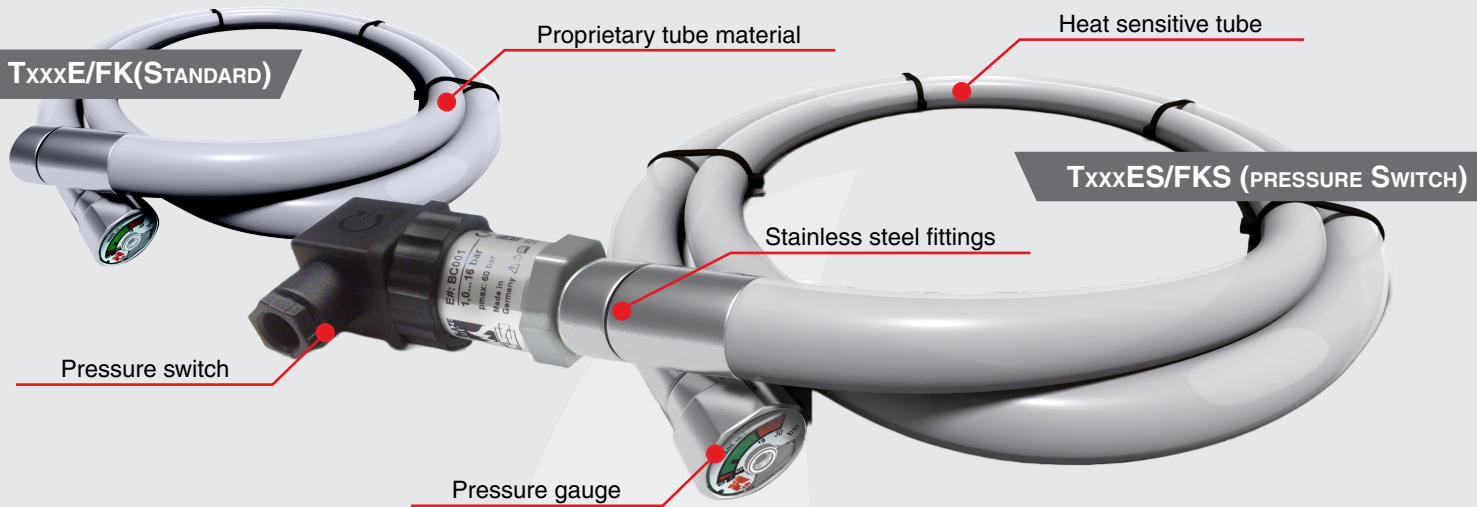
Independent of power  
Long Durability  
Non-toxic Safe for people  
Automatic activation  
Small & flexible  
Easy installation  
Clean Leavages  
Maintenance free  
Cost-effective



Smarter Solutions with Cutting-Edge Technology

# BLAZE CUT TECHNOLOGY

BlazeCut has globally pioneered cylinder-less fire suppression systems with the BlazeCut T Series systems. The BlazeCut T Series system consists of a heat-sensitive tube made of specialized plastic and closed with stainless steel fittings on each end. The tube serves as both a fire detection network and a storage receptacle for the extinguishing agent, so no additional storage device, such as a cylinder, is needed.



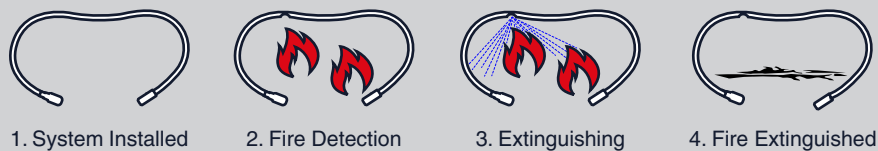
## SYSTEM OPERATION

The BlazeCut T Series system is designed to protect small enclosed or semi-enclosed spaces. The BlazeCut T Series system operates automatically without any external power source\*.

In case of fire, the tube ruptures, creating a nozzle closest to the fire source. The tube with a clean gas agent inside then releases the agent through that nozzle directly onto the fire.

\*TxxxE/TxxxFK does not require external power source

TxxxES/TxxxFKS and TxxxES-E/TxxxFKS-E requires power for pressure switch operation



## OPTIONAL COMPONENTS

The T Series systems can be fitted with a pressure switch. This allows for the installation of additional components into the system. The pressure switch sends a signal to the BlazeCut alarm panel and/or to a wide range of audio-visual signalling devices for indoor and outdoor applications. A wide range of options is available to best fit the needs of each application.



**PRESSURE SWITCH**

The integrated pressure switch monitors the pressure and sends a signal if the pressure drops under a preset value or if the system discharges in the event of a fire. The system must be ordered with a pressure switch already installed. Available in TxxxES/FKS and economical TxxxES-E/FKS-E version.



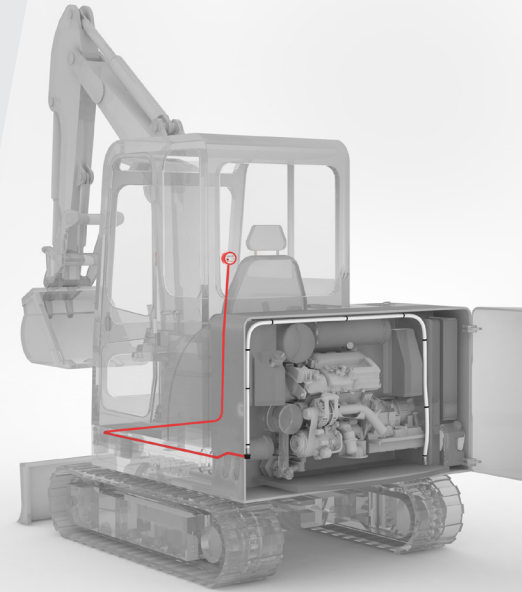
**ALARM PANEL**

The BlazeCut Alarm Panels AAP310 and AAP400 are simple and effective optional devices for monitoring system status and component functionality, with audible and visual fire signalling.



## SYSTEM FEATURES

- ▶ **Small & flexible** – high flexibility of BlazeCut tube with A, B, C, and electrical fires-class rating can protect most spaces
- ▶ **No cylinder for storage required** – the whole system can be placed inside the protected enclosure as there is no cylinder
- ▶ **Cost-effective** – long working life, automatic activation and zero maintenance beat the competition in cost-effectiveness
- ▶ **2 Clean agent options** – T Series is offered in two gaseous clean agent options HFC-227ea and FK-5-1-12, which are both industry recognised fire agents
- ▶ **Optional pressure switch** – and other additional components like signalling unit to perform further safety functions
- ▶ **Clean and effective extinguishing agent**
- ▶ **No pressurisation needed** – the system works by increasing the pressure of the extinguishing agent when heated.
- ▶ **Maintenance-free** – throughout the system's lifetime. Zero maintenance costs
- ▶ **Harmless upon discharge** – no damage caused to equipment inside or people's health outside the enclosure
- ▶ **Automatic operation based on increased temperature** – ideal for unattended or out-of-sight spaces
- ▶ **Pressure gauge** – constantly monitoring the system pressure – can be checked at any time
- ▶ **Long working life** – up to 10 years depending on the type of application
- ▶ **Simple installation** – no pressurisation required for installation
- ▶ **Market leading warranty of 5 years**



## SPECIFICATION AND MODELS

The required system parameters are easy to determine – simply by measuring the width, height, and depth of the enclosed space within the application, and by multiplying the measurements to calculate the volume of the enclosure to be protected. T Series selection is based on volumetric calculations contained under NFPA2001:2022 minimum design concentrations for gaseous fire suppression systems.

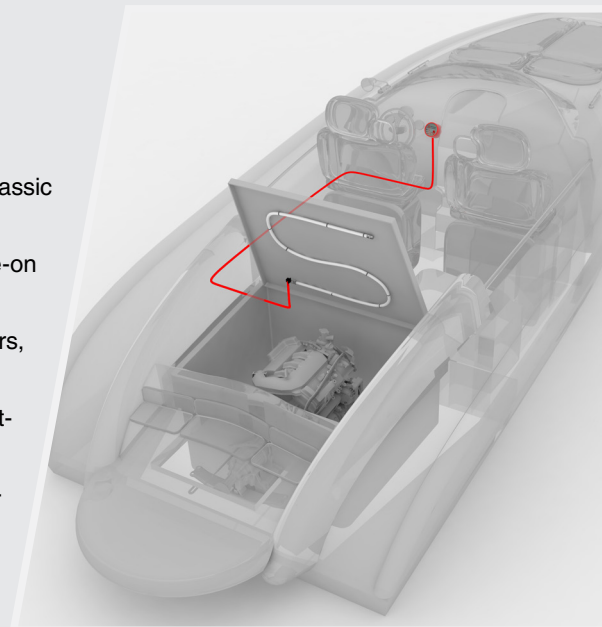
**Note:** The T Series system is not suitable for open areas. For application in vehicles, please refer to the application guide available on our website ([www.blazecut.com](http://www.blazecut.com)).

Specifications for TxxxE (HFC-227ea agent models)	Details
Part numbers of standard T Series HFC model range	T025E to T600E
Part numbers of pressure switch variant	T025ES to T600ES
Length of systems	25 cm up to 6 m
Amount of fire agent	0.05 kg to 1.5 kg
Volume coverage for electrical applications (protected at 20°C)	0.09 m <sup>3</sup> - 2.73 m <sup>3</sup>
Volume coverage for engine applications (protected at 20°C)	0.09 m <sup>3</sup> - 2.08 m <sup>3</sup>
Standard operating temperature (pressure switch model)	-40°C to +90°C (-20°C to +80°C)
Discharge temperature	105°C ± 3°C

Specifications for TxxxFK (FK-5-1-12 agent models)	Details
Part numbers of standard T Series FK model range	T025FK to T400FK
Part numbers of pressure switch variant	T025FKS to T400FKS
Length of systems	25 cm up to 4 m
Amount of fire agent	0.05 kg to 1.06 kg
Volume coverage for electrical applications (protected at 20°C)	0.08 m <sup>3</sup> - 1.61 m <sup>3</sup>
Volume coverage for engine applications (protected at 20°C)	0.06 m <sup>3</sup> - 1.21 m <sup>3</sup>
Standard operating temperature (pressure switch model)	0°C to +90°C (0°C to +80°C)
Discharge temperature	142°C ± 3°C

## TYPICAL APPLICATIONS

- ▶ **Marine inboard and outboard engines** (including jet skis)
- ▶ **Engine compartments of road vehicles** (cars, SUVs, 4x4s, vans, minibuses, classic cars, etc.)
- ▶ **Engine compartments of other vehicles** (motorized carts, snowmobiles, ride-on mowers, etc.)
- ▶ **Mobile machinery** (small to medium-size forklifts, excavators, skid steer loaders, sweepers, cranes, etc.)
- ▶ **Electrical switchboards** (fuse boxes, electrical supply sources, battery compartments, car batteries, inductors, MCC cabinets)
- ▶ **Other enclosed applications** (network installations, servers, audio-video equipment, ATMs, electric fuel bowsers, 3D printers, etc.)



## EXTINGUISHING AGENTS

**HFC-227ea and FK-5-1-12** are both globally recognised clean gas extinguishing agents used in the BlazeCut T Series for volume fire suppression. The agent siphons heat from the fire, alters the chemical chain reaction of burning, slows and stops the whole process, effectively extinguishing the fire.

It is not toxic or poisonous and has no carcinogenic or mutagenic effects, so it is safe for people. It is the agent of choice in protecting enclosures for advantages, such as:

- ▶ A, B, C and electrical fires
- ▶ Electrically non-conductive
- ▶ Non-corrosive
- ▶ Resistant to high-temperature and low-temperature changes
- ▶ Siphons heat
- ▶ Leaves no residue
- ▶ No clean-up necessary
- ▶ No damage to the equipment
- ▶ Zero ozone-depleting potential

**Clean Gaseous Agents**  
**HFC-227ea**  
**FK-5-1-12**



### CONTACT DETAILS:

[sales@blazecutgroup.com](mailto:sales@blazecutgroup.com)

+61 2 8006 1300

### GLOBAL HEAD OFFICE:

BlazeCut Pty Ltd, Level 24, 300 Barangaroo Avenue,  
Sydney, NSW, 2000, Australia

### MANUFACTURING

BlazeCut s.r.o., Bratislava, Slovakia

**DEALERS / DISTRIBUTORS:** BlazeCut has a global network of dealers and distributors. To find your nearest dealer, or to become one, please contact BlazeCut.

